

MAKING CHERRY ORCHARD BETTER AREA ACTION PLAN

Presentation to Dublin City Council

20th September 2017

Jerry Barnes



PRESENTATION OUTLINE

- Purpose of the Plan
- The Cherry Orchard Area
- Consultations and Issues
- The Vision
- The Village Centre
 - Overall Concept
 - Village shops and supermarket
 - Community and social enterprise hub
- The Actions

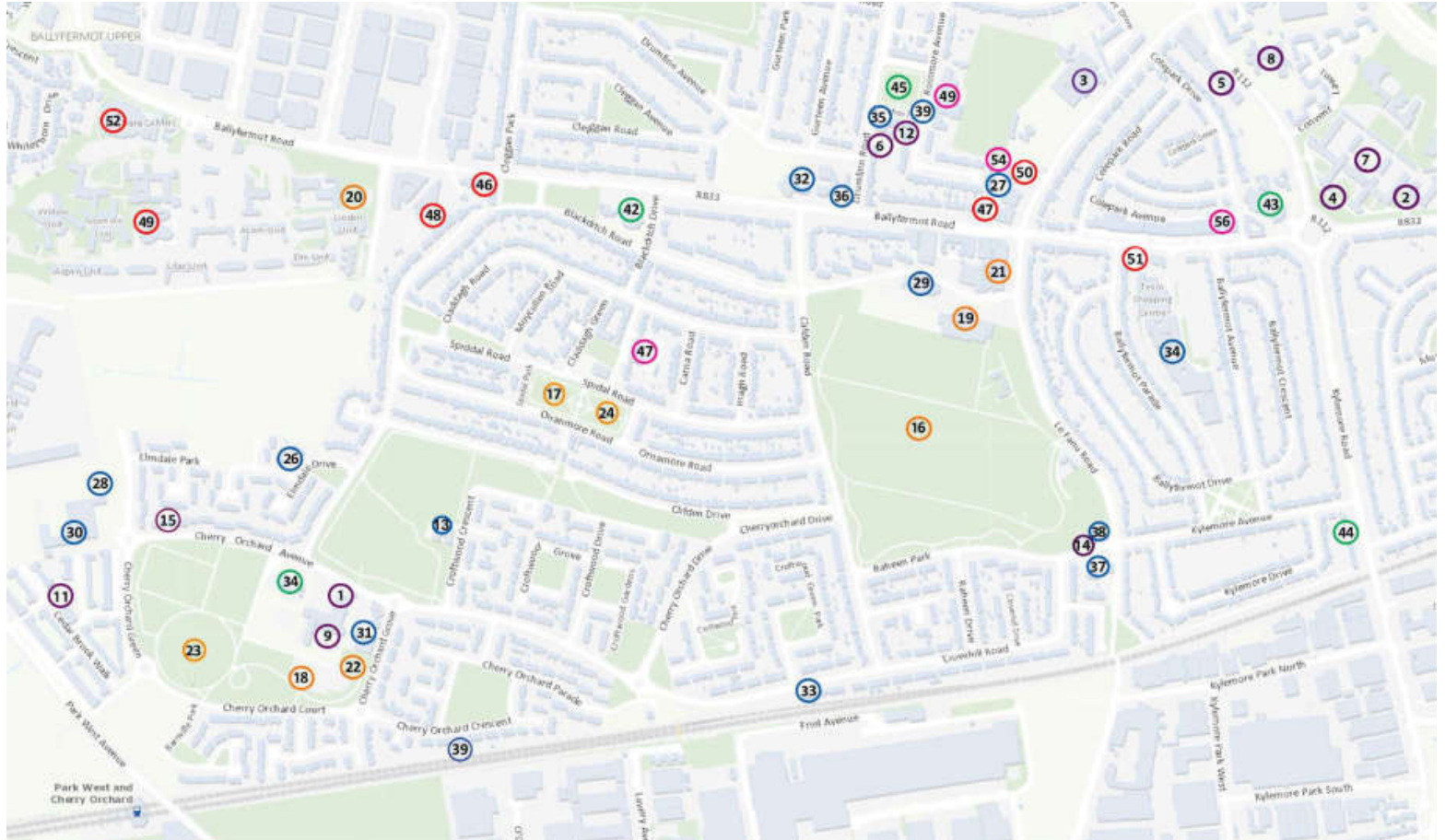
THE AREA PROFILE

- Young population
- High unemployment (25%)
- High deprivation

Electoral Division	Pobal HP Index 2011	Pobal HP Index 2016
Cherry Orchard A	-13.56	-13.27
Cherry Orchard C	-10.33	-10.93
Carna	-16.54	-14.96

- Low educational achievement
- High level of local authority housing

CHERRY ORCHARD AREA



CONSULTATIONS

- Extensive Consultations
 - 5 Task Groups
 - Issues paper and public comments
 - Government departments & agencies
 - Focus groups
 - Open day



ISSUES

- **Institutional and Governance:** lack of voice, need for interagency cooperation, effective delivery mechanisms
- **Community & Citizenship:** strong community, communications, support for families, village centre
- **Policing & Safety:** community policing, vulnerable youths, anti-social behaviour, crime, drugs issue, environment, horses
- **Education:** transition, after-school, literacy & numeracy supports
- **Employment & Training:** lone parent support, start-up support, facilities, space
- **Built Environment:** no centre or shops, underused parks, defensive appearance, additional housing, schools, creches

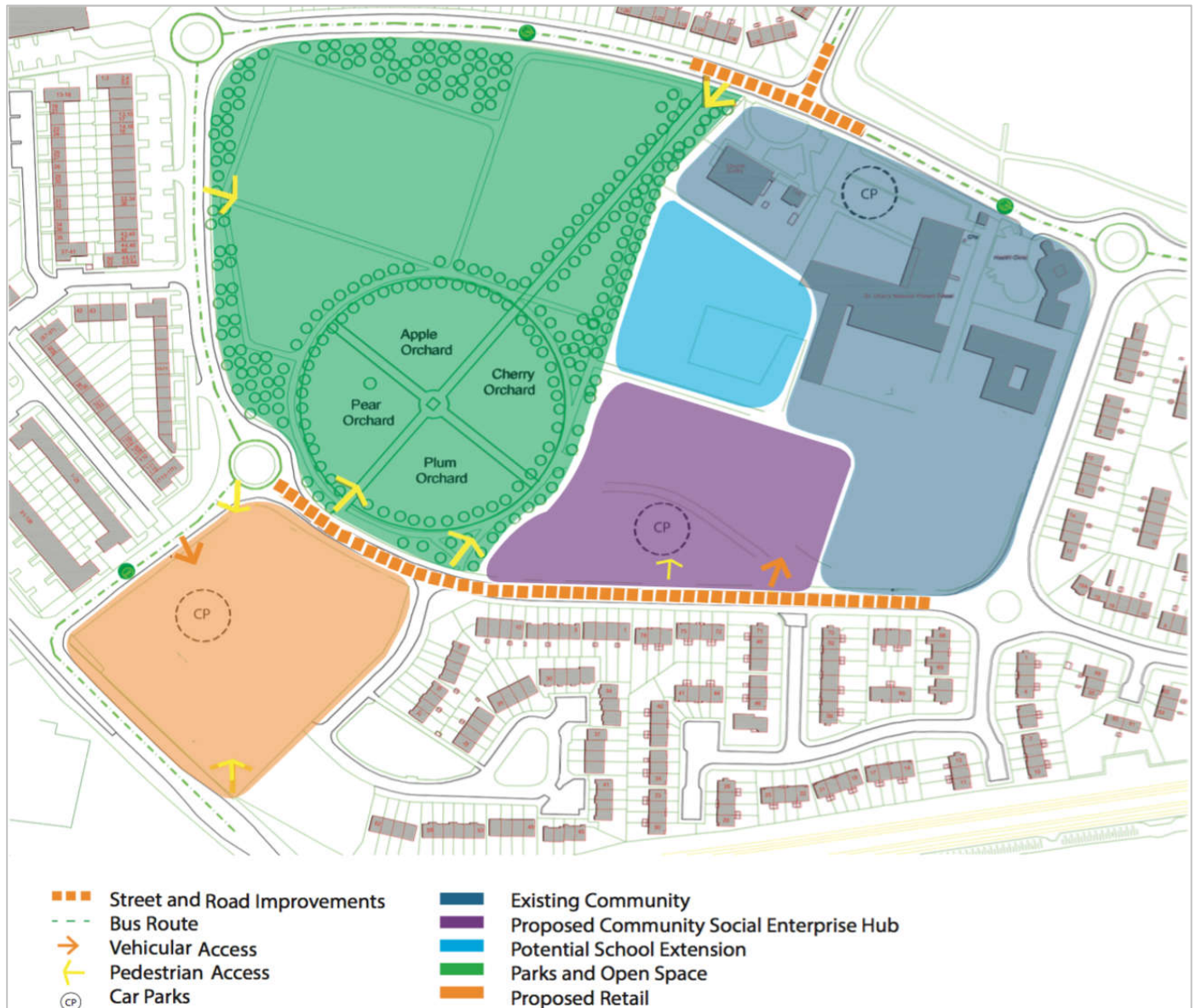
THE VISION

To create, at its heart, a content, caring and vibrant sustainable community, which caters for the employment, community and environmental needs of existing and future generations.

THE VILLAGE CENTRE

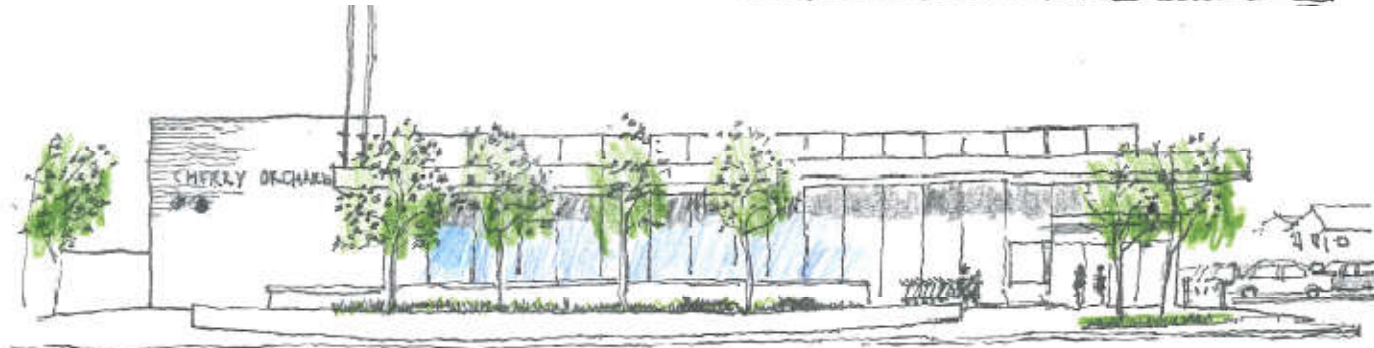
- Cherry Orchard needs a heart
- Existing cluster (church, community centre, St. Ultans School)
- Lack of local shops in the area
- Areas of underused open space
- Connectivity and safety





LOCAL SHOPS

- Supermarket
- Local shops (newsagents, hairdressers, etc)
- Cafes, meeting place
- Council owned site



COMMUNITY & SOCIAL ENTERPRISE HUB

- Information, advice, business space, start up support
- Existing facilities and services need to be fully utilised
- Strategy
 - Social enterprise manager
 - Feasibility Study for development
 - Progress to development if feasible.
- Integrate with existing community centre
- Synergies with retail
- Relates to the park



THE ACTIONS

- Cherry Orchard Development Group to drive forward implementation of the plan
- Need for coordinated approach between agencies
- Include all stakeholders within the community to get re-engagement
- Actions to be delivered over a five year period 2017-2022
- Internal and external funding

THE ACTIONS (38 IN TOTAL)

- **Institutional and Governance:** steering, coordination, consultation, implementation and communication
- **Community & Citizenship:** volunteer officer, multi-disciplinary family support team, drop-in clinic, restorative practice, mental health supports, arts programme
- **Policing & Safety:** community policing, target vulnerable youths, Restorative Justice programme, safety in design
- **Education:** expand affordable childcare, school attendance, after-school places and transition programme
- **Employment & Training:** educational/training network, social enterprise manager, support social enterprises, feasibility study for hub, coordinate with Park West employers, lone-parent support
- **Built Environment:** identify key matters for any LAP, mix of housing tenure and management of housing stock, bring forward retail site, tree planting programme, park design

Questions

